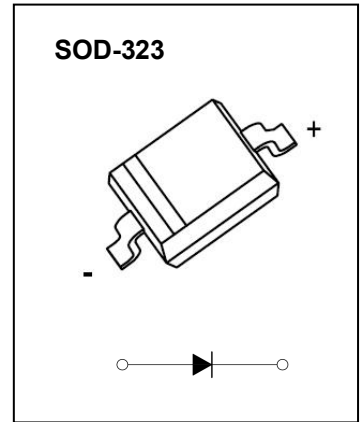


FEATURES

- Low Reverse Current
- Surface Mount Package Ideally Suited for Automatic Insertion
- Fast Switching Speed
- For General Purpose Switching Applications

SOD-323 Plastic-Encapsulate Diodes



MARKING:

TKBAV19WS	TKBAV20WS	TKBAV21WS
A8	T2	T3

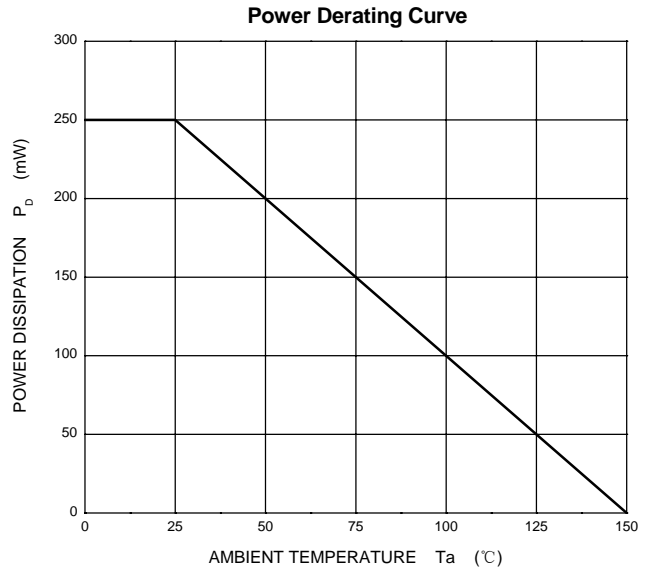
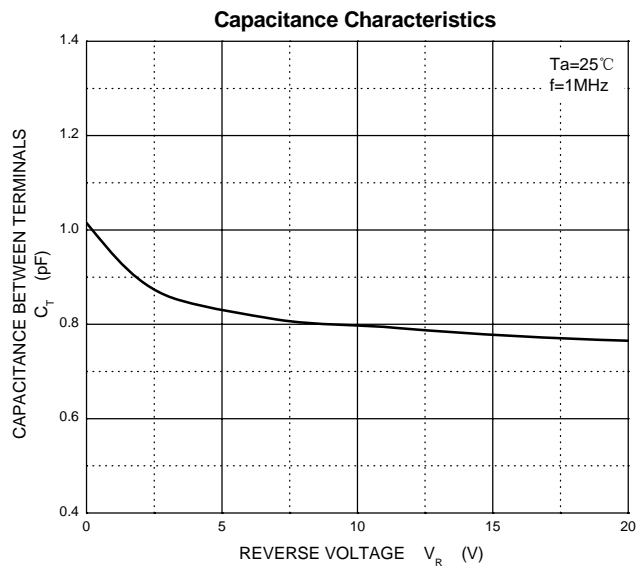
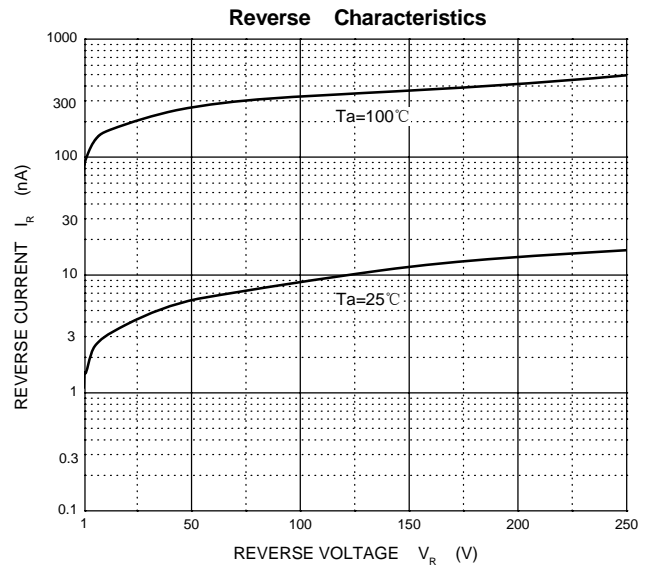
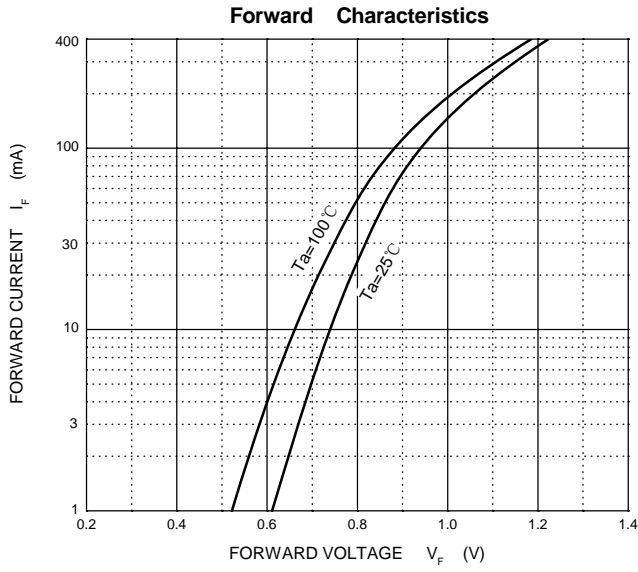
MAXIMUM RATINGS (T_a=25°C unless otherwise noted)

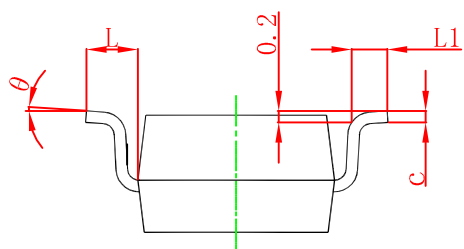
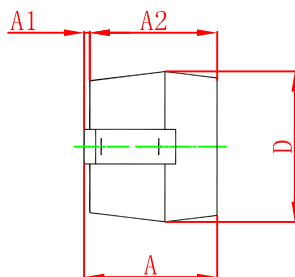
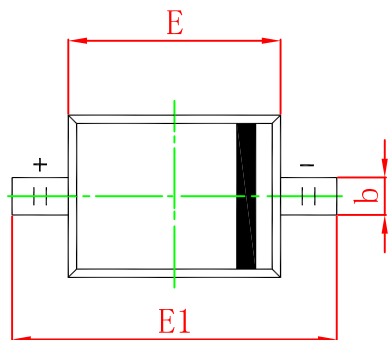
Symbol	Parameter	Value			Unit
		TKBAV19WS	TKBAV20WS	TKBAV21WS	
V _{RM}	Non-Repetitive Peak Reverse Voltage	120	200	250	V
V _{RRM}	Peak Repetitive Reverse Voltage	100	150	200	V
V _{RWM}	Working Peak Reverse Voltage				
V _{R(RMS)}	RMS Reverse Voltage	71	106	141	V
I _O	Average Rectified Output Current	200			mA
I _{FSM}	Non-repetitive Peak Forward Surge Current @ t=8.3ms	2.0			A
P _D	Power Dissipation	250			mW
R _{θJA}	Thermal Resistance from Junction to Ambient	500			°C/W
T _j	Junction Temperature	150			°C
T _{stg}	Storage Temperature	-55~+150			°C

ELECTRICAL CHARACTERISTICS(T_a=25°C unless otherwise specified)

Parameter	Symbol	Test conditions	Min	Typ	Max	Unit
Reverse current	I _R	V _R =100V TKBAV19WS			0.1	uA
		V _R =150V TKBAV20WS			0.1	
		V _R =200V TKBAV21WS			0.1	
Forward voltage	V _F	I _F =100mA			1	V
		I _F =200mA			1.25	
Total capacitance	C _{tot}	V _R =0V,f=1MHz			5	pF
Reverse recovery time	t _{rr}	I _F = I _R =30mA, I _{rr} =0.1*I _R , R _L =100Ω			50	ns

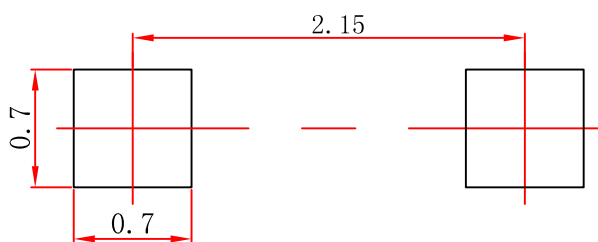
Typical Characteristics





Symbol	Dimensions In Millimeters		Dimensions In Inches	
	Min.	Max.	Min.	Max.
A		1.000		0.039
A1	0.000	0.100	0.000	0.004
A2	0.800	0.900	0.031	0.035
b	0.250	0.350	0.010	0.014
c	0.080	0.150	0.003	0.006
D	1.200	1.400	0.047	0.055
E	1.600	1.800	0.063	0.071
E1	2.550	2.750	0.100	0.108
L	0.475 REF.		0.019 REF.	
L1	0.250	0.400	0.010	0.016
θ	0°	8°	0°	8°

SOD-323 Suggested Pad Layout



Note:

1. Controlling dimension: in millimeters.
2. General tolerance: ± 0.05 mm.
3. The pad layout is for reference purposes only.